

30-98 VAUXHALL

*The Car of Grace
that Sets the Pace*



A car of very high power development for touring and racing

HE 30-98 h.p. Vauxhall was brought out thirteen years ago. Even then it was guaranteed to attain a speed of 100 m.p.h., a guarantee believed to be unprecedented for a standardised chassis. Appreciation of the fact that so long ago the 30-98 h.p. Vauxhall was already a car of quite exceptional speed, gives a clue to its capabilities to-day.

POWER DEVELOPMENT

The engine is of four cylinders, 98 mm. bore by 140 mm. stroke, with overhead valves, the cylinder capacity being 4.25 litres.

It develops 120 h.p. at 3,500 r.p.m. Overheating is avoided by the care which has been taken to have the exhaust valve seats and stems, and also the sparking plugs, entirely surrounded by the cooling water. Expensive special plugs are therefore not needed; an ordinary cheap porcelain plug stands up to the work indefinitely. A special type of piston is employed that is able to work with a minimum clearance and to deal with the vast amount of heat generated in an engine of this size when running at high crankshaft speeds.

PISTON DESIGN

The pistons, of die-cast aluminium, are a notable triumph of the die-maker's art. They are so designed that the heat of the explosion is transmitted from the piston head by two paths; one leads down the skirt of the piston, and the other leads down the cylindrical support carrying the gudgeon pin to the base of the skirt, where the piston is in contact with the coolest part of the cylinder wall.

The valveless rocking plunger pump supplies oil under pressure to a very plain bearing in the engine. The overhead rockers are lubricated by the same pump, the supply of oil being controlled by a reducing valve in the rocker cover.

FOUR-WHEEL BRAKING

Hydraulic brakes, similar to those employed in the new 25-70 h.p. Vauxhall, are a new feature in the current pattern. The front brakes are connected with the transmission brake, giving pedal-controlled braking on four wheels. The hand brake is a completely independent brake working on shoes in the rear wheels, which are fitted with drums of a larger size than before, providing the larger braking surface which has been called for by the increased size and weight of this model.

The gearbox is of the same type as is used in the 25-70 h.p. Vauxhall, this following from the employment of the same braking system as that of the larger car.

ROAD PERFORMANCE

In its road performance the 30-98 h.p. Vauxhall displays a satisfying smoothness of running, not only at high but also at low speeds, its enormous power being joined with the tractability that is expected in a normal high-grade touring car. It is, in short, a very fast but a comfortable touring car, safe, and easy to drive, in that it holds the road extremely well, is provided with braking power corresponding to its phenomenal acceleration and speed, and has the light yet firm Vauxhall steering. Its hill-climbing capabilities may be judged from the many successes of standard pattern 30-98 Vauxhall cars at the principal hill-climbing contests year after year.

SPEED GUARANTEE

Any purchaser of a 30-98 h.p. Vauxhall can feel assured that its maximum speed as a touring car (with the full equipment of mudguards, windscreen, hood, lamp, etc., and carrying four persons) will be not less than 80 to 85 m.p.h. Fitted with a racing body it laps Brooklands at 100 miles an hour. These speeds are guaranteed.

The 30-98 h.p.
VAUXHALL
'Velox' Open
Touring Car

To seat four

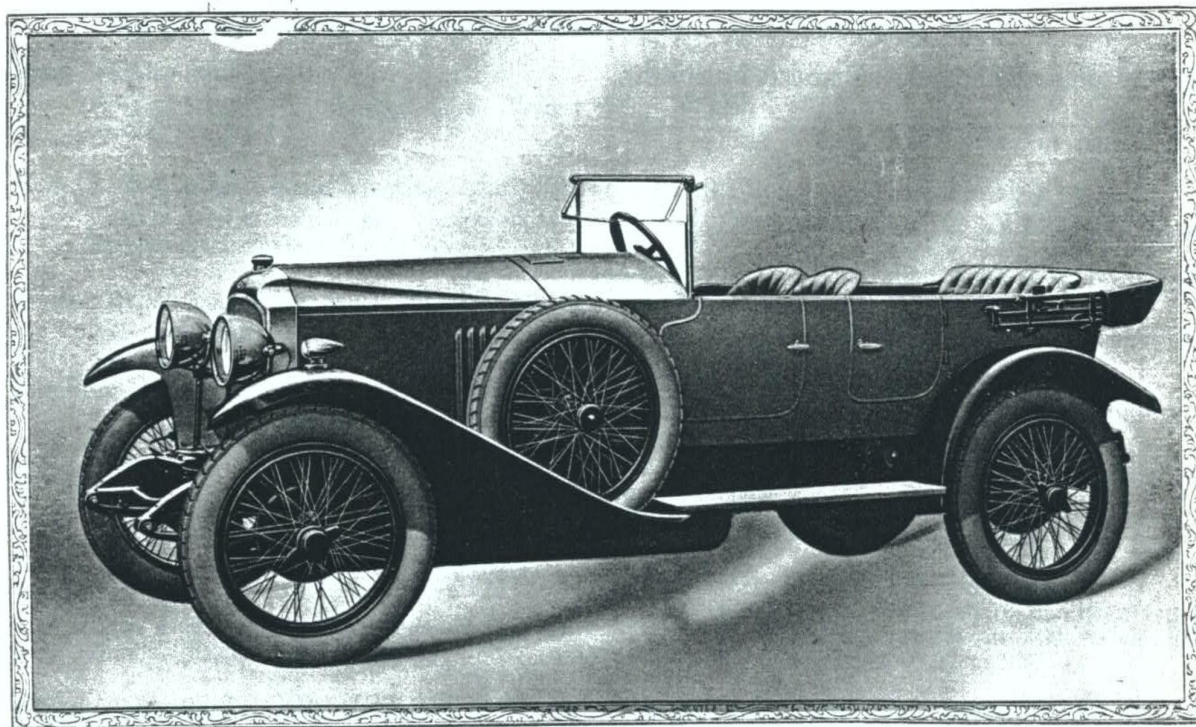
THIS body is of specially light, though strong, construction. It can be painted any colour; or, if desired, the entire body and wings can be of polished aluminium with the frame and petrol tank painted flat black. The upholstery is leather, antique finish, to harmonize with the body colour.

The front seats, bucket shape, are adjustable for leg room. The front screen has a hinged top panel, and is brought close to the steering wheel. A handsome flush-fitted walnut instrument board carries the clock, speedometer, switchboard, lamp and gauges. Luggage grid, spring gaiters and automatic windscreen wiper are included in the standard equipment.

The two spare wheels are carried sunk into the running boards.

The lines of this body are designed to accord with the mechanical attributes of the car, which would indeed lose much of its life and speed were it fitted with a body of heavier weight and of less nicely-adjusted proportions than those of the Vauxhall 'Velox' body.

Price, complete, £1,150



The 30-98 h.p.
VAUXHALL
'Clinton' Saloon

To seat four

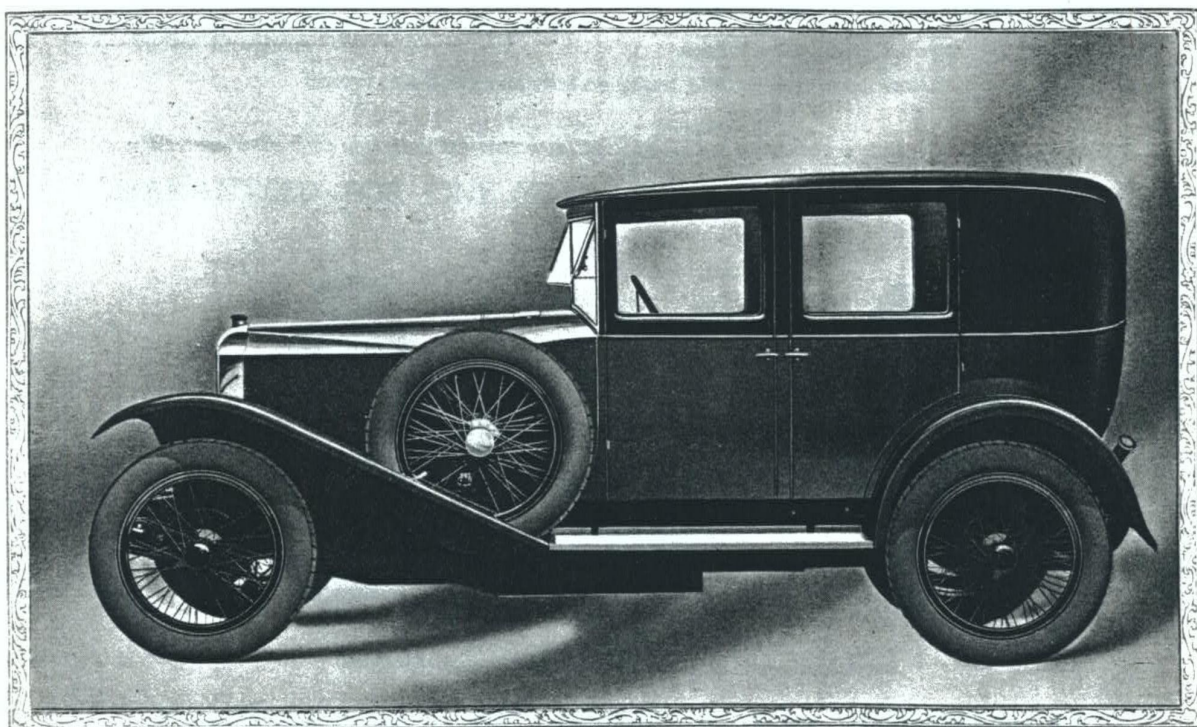
THIS closed body on the famed 30-98 h.p. chassis is built on the Weymann principle, and meets the demand which has been expressed that the power and speed of the '30-98' should be made available in conjunction with the comfort of a closed body.

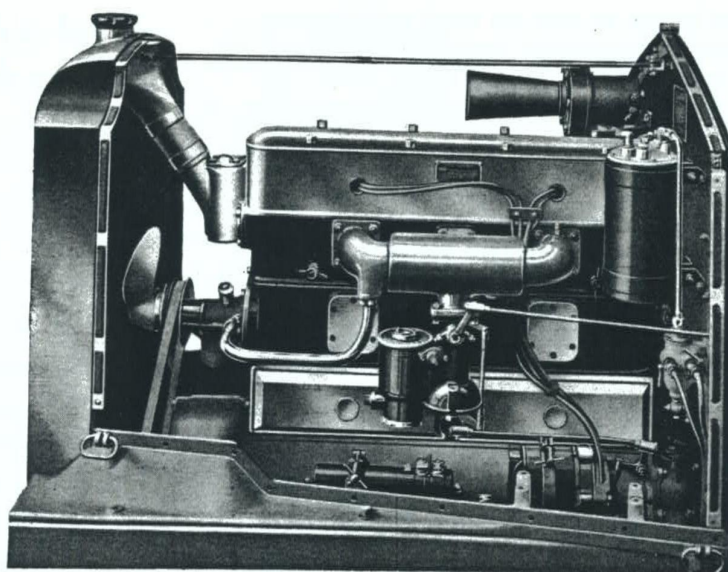
The seating is for four, and the upholstery is of brown furniture hide. Spare wheel on each side. There are four doors, and the sliding front seats give plenty of room for getting in and out of the car.

Luggage grid, spring gaiters and automatic windscreen wiper are included in the standard equipment.

Noted for the way it holds the road, and for its light steering and powerful brakes, the 'Clinton' is the ideal car for the fastest possible travelling at all seasons with the greatest comfort.

Price, complete, £1,425





NEAR SIDE VIEW OF THE 30-98 H.P. ENGINE

Some '30-98' Successes in 1926

This list excludes racing-car successes, and gives only those won by standard pattern '30-98' cars.

Inter-Varsity Hill-climb

First and third in unlimited class. Fastest time of the day.

R.A.C. of Australia Race Meeting, Maroubra

First in 5-miles handicap. Second in four laps handicap, making fastest lap.

Southport Motor Club Race, Birkdale Sands

First in unlimited class (novice).

Cheshire Auto-Cycle Union, Southport Sands

Second in unlimited class (sports).

Skegness Speed Trials

Seacroft handicap, first and second.

R.A.C. of Australia Reliability Touring Contest

Two firsts and two seconds in the hill-climbs. Fastest time of the day.

Royal Automobile Club of Victoria, Alpine Contest

Fastest time in speed test; fastest time in "B" section sports models.

Midland Automobile Club Hill-climb, Shelsley Walsh

First in team event. First in class 6.

B.A.R.C. August Bank Holiday Meeting

First in twenty-fifth 90 m.p.h. short handicap.

R.A.C. of Australia, One-day Reliability Touring Contest

First and third in hill-climb. Fastest time of the day.

Midland Automobile Club Hill-climb, Shelsley Walsh (second meeting).

First, second and third in unlimited sports class.

First and second on time in formula class.

B.A.R.C. Autumn Meeting

First in 100 m.p.h. short handicap (speed 95.13 m.p.h.). First in 100 m.p.h. long handicap (speed 95.37 m.p.h.)

Liverpool Motor Club Speed Trials, Colwyn Bay

First in standard touring class; first and second in standard sports.

30-98 h.p. Vauxhall—Specification

ENGINE—Four cylinders, 98 mm. bore by 140 mm. stroke, developing on the bench 120 b.h.p. Overhead valves. Duralumin connecting rods. R.A.C. rating, 23.8 h.p. Tax £24. Cylinder capacity 4.25 litres.

IGNITION—High tension magneto, variable spark.

CARBURETTOR—Zenith aero type 48 R.A.

LUBRICATION—Vauxhall pump system.

COOLING—Vauxhall fan and pump combination. Temperature control by thermostat. Honeycomb radiator.

CLUTCH—Vauxhall multi-disc.

GEARBOX—Four speeds and reverse. Direct on top.

Gear Ratio				Speed in m.p.h. at 1,000 r.p.m.
First	.	.	12.2	7.6
Second	.	.	7.8	11.8
Third	.	.	5.1	18.1
Fourth	.	.	3.33	27.8
Reverse	.	.	17.2	5.37

BACK AXLE—Semi-floating type. Spiral bevel drive and bevel differential.

BRAKES—Vauxhall four-wheel hydraulic braking system and independent rear brake.

SUSPENSION—Semi-elliptic springs, with shock absorbers throughout.

WHEELS—Detachable wire, Dunlop tyres, 32 inches by 4½ inches.

WHEELBASE—9 feet 10 inches.

TRACK—4 feet 6 inches.

DIMENSIONS—Body space 8 feet. Dash to back wheel centre 6 feet 6½ inches. Length of car (hood down) 14 feet 1 inch. Width of frame 32 inches. Width overall 5 feet 7 inches.

PETROL SUPPLY—Vacuum feed from tank at rear. Tank holds 14 gallons.

BODY—A light touring car body, the 'Velox' is built by the Company. A closed body, the 'Clinton' (Weymann type) is also supplied. See remarks below on weight.

EQUIPMENT—This standard chassis equipment includes electric starting and lighting, six lamps; walnut instrument board fitted with speedometer, clock, lamp, switchboard, dimmer switch for headlights and oil gauge; two spare wheels and tyres; spring gaiters; dual note electric horn; petrol level indicator in tank; full tool kit.

Luggage grid and automatic windscreen wiper are included in the equipment of each car.

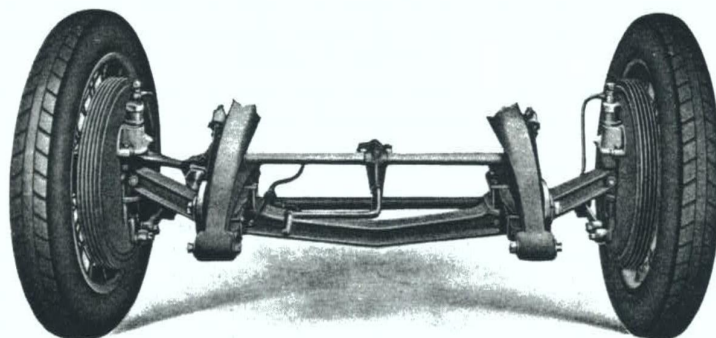
WEIGHT—The weight of the 30-98 h.p. chassis, with full equipment and tanks full, is 25 cwt. The complete 'Velox' four-seater car weighs 30 cwt. Customers intending to have a body built by their own coach-builder are notified that the maximum body weight for this chassis is 6 cwt.

Price of chassis, with standard equipment, £950, delivery at our works.

ALTERATION OF SPECIFICATION

We reserve the right to make at any time such alterations in our specifications as we may deem desirable.

GUARANTEED FOR ONE YEAR FOR HOME OR OVERSEAS USE



The 30-98 h.p. chassis is now fitted with the Vauxhall-designed hydraulic braking system. Note the large ribbed drums.

VAUXHALL MOTORS LIMITED, LUTON, BEDFORDSHIRE

Telephone: Luton 466 (4 lines)

Codes: Motog and Bentley

Telegrams: Carvaux, Luton

Contractors to the Admiralty and the War Office

Vauxhall
THE CAR SUPEREXCELLENT